

# Plastic Pressure Regulator

R035...R095

## Description

Modular regulator easy to interlock with other regulators, filters or filter regulators of the same series, without the need for double nipples or any other fittings. A sensitive rolling diaphragm allows good pressure regulation.

## Media

compressed air, non-corrosive gases or liquids

## Supply pressure

max. 15 bar, max. 10 bar for R035

## Adjustment

by plastic knob with snap-lock, R035 without snap-lock

## Relieving function

relieving, optionally non-relieving

## Gauge port

G $\frac{1}{8}$  on both sides of the body (G $\frac{1}{4}$  at R095), one screw plug supplied

## Mounting position

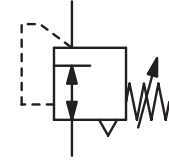
any

## Temperature range

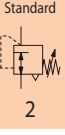
0 °C to 50 °C / 32 °F to 177 °F

## Material

Body: nylon  
Elastomer: NBR/Buna-N  
Inner valve: brass  
Thread insert: brass  
POM at R035 and R042



G $\frac{1}{8}$  up to G1



Dimensions			K <sub>v</sub> value (m <sup>3</sup> /h)	Flow rate		Connection thread G	Pressure range bar	Order number
A mm	B mm	C mm		m <sup>3</sup> /h*1	l/min*1			

Pressure regulator						supply pressure max. 15 bar, series R035 max. 10 bar, relieving,	R0	
36	61	12	0.11	15	250	G $\frac{1}{8}$	0... 6	R035-01B
for battery assembly, without clips							0... 6	R035-01RB
42	92	20	0.36	51	850	G $\frac{1}{4}$	0... 4	R042-02B
							0... 8	R042-02C
							0... 12	R042-02D
63	129	38	0.59	84	1400	G $\frac{3}{8}$	0... 4	R050-03B
							0... 8	R050-03C
							0... 12	R050-03D
63	129	38	0.63	90	1500	G $\frac{1}{2}$	0... 4	R052-04B
							0... 8	R052-04C
							0... 12	R052-04D
63	145	42	1.0	138	2300	G $\frac{1}{2}$	0... 4	R075-04B
							0... 8	R075-04C
							0... 12	R075-04D
137	145	42	1.0	144	2400	G $\frac{3}{4}$	0... 4	R080-06B
							0... 8	R080-06C
							0... 12	R080-06D
115	222	48	6.3	900	15000	G1	0... 4	R095-08B
							0... 8	R095-08C
							0... 12	R095-08D

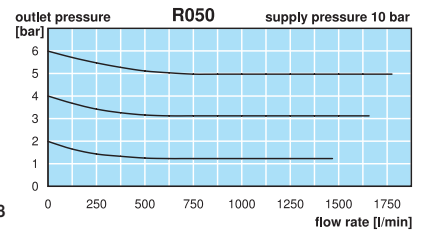
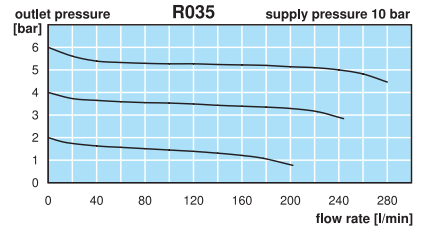
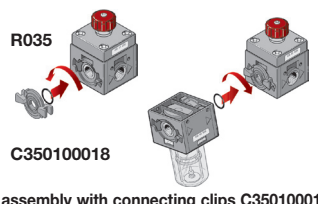
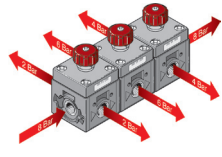
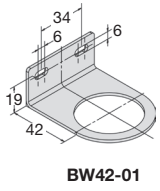
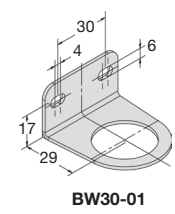
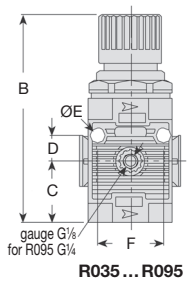


## Special options, add the appropriate letter

non-relieving also for liquids R0...0...K

## Accessories, enclosed

- pressure gauge: Ø 23 mm, 0...\*2 bar, G $\frac{1}{8}$ , max. 12 bar for R035; Ø 40 mm, 0...\*2 bar, G $\frac{1}{4}$  for R042; Ø 50 mm, 0...\*2 bar, G $\frac{1}{2}$  for R050 to R080; Ø 63 mm, 0...\*2 bar, G $\frac{1}{4}$  for R095
- mounting bracket: made of steel, mounting nut at the device for R042; for R050 to R080 for R095
- set of brackets: made of steel for R035
- connection clips: made of steel for R035



series	D	Ø E	F	K	L
R035	8	3.5	20	-	36
R042	10.5	4.5	31	-	42
R050/52	16	5.5	41	63	52
R075	17.5	5.5	45	75	63
R080	17.5	5.5	45	-	63
R095	65	8.5	174	115	95

\*1 at 10 bar supply pressure, 6 bar outlet pressure and 1 bar pressure drop  
\*2 04 = 0...4 bar, 06 = 0...6 bar, 10 = 0...10 bar, 16 = 0...16 bar

Accessories and mounting brackets: see chapter for FRL service units  
Gauges: see chapter for measuring devices

PDF CAD  
www.aircom.net

Order example:  
R035-01B